



FOCUS  
CLARITY  
GROWTH  
RESPECT



# Sheep NLIS and eID Helpdesk: Frequently Asked Questions

for Westen Australia

*This project is supported by Magnify Agriculture Global, Curtin University and WAFarmers through funding from the Australian Government's Traceability Grants Program Round 3.*



## Contents

<b>Snap shot: the most FAQs</b> .....	4
1. Do I eID tag my lambs this year?.....	4
2. Can I sell my old ewes and wethers as they are with their visual tags?.....	4
3. What colour eID for older sheep? .....	4
4. Are yellow and pink eIDs covered under the incentive scheme this year (2026)?.....	4
5. Do I have to scan my sheep onto the truck? .....	4
6. What is difference between fully and conditional approved eID tags? .....	4
7. What are my tag type options? .....	5
8. Which tag should I buy?.....	5
9. What is the main difference between eID and visual tagging? .....	5
10. When will the sheep and/or goats on my property need to be eID tagged?.....	5
11. What equipment will stock owners need?.....	6
GENERAL REMINDERS: .....	6
<b>Basic checks for stock movement</b> .....	6
1. How do I check if my PIC is valid?.....	6
2. How do I check if my PIC is LPA accredited? .....	6
3. How do I create an eNVD? .....	6
<b>eID devices (tags)</b> .....	7
1. Can I use any type of eID?.....	7
2. Do I need a new tag applicator? .....	8
3. Will there be a PIC or Brand on my eID tag?.....	8
4. Why do I have to use species-specific eIDs for sheep and goats? .....	8
5. Do I need to upload my new tags onto the NLIS database? .....	8
6.....	9
How will pink post-breeder tags be used in the eID system?.....	9
7. Will there be any exemptions?.....	9
8. Do I have to use eID on lambs going to slaughter?.....	9
9. Do I have to tag my animals if they never leave the property?.....	10
10. What happens if I have more lambs than tags? .....	10
11. What happens to electronic tags I do not use in one year?.....	10
12. Is information stored on the tag? .....	10
13. Can I re-use my tags?.....	10



<b>The NLIS database</b> .....	11
1. What is the NLIS database? .....	11
2. What information is needed to make a record on the NLIS database? .....	11
What do I have to do on the database? .....	11
1. Who has to update the NLIS database? .....	11
2. When will stock owners need to update the NLIS database? .....	11
3. Can someone do the scanning / transfer for me? .....	12
4. When will the transfer of sheep to my PIC be done for me? .....	12
5. Do I need to upload my new tags onto the NLIS database? .....	12
6. What do I do with tags from dead sheep?.....	12
7. What do I do when I find a tag on the ground / in the yards / on the truck .....	12
<b>Creating an account and using the NLIS database</b> .....	13
1. Creating an NLIS account .....	13
2. Transferring stock on to my PIC Via the NLIS database on a computer/laptop .....	15
3. NLIS Buddy: Transferring stock to your PIC using NLIS Buddy app on your phone .....	18
4. Preparing a File for NLIS Upload .....	21
5. Run a report to see when sheep came on / went off my PIC .....	21
6. Recording a replaced tag on the database (when I have the old tag).....	21
7. Remove tags off the NLIS database when stock die.....	21
8. Change status of a tag if lost, damaged .....	21
9. Record tag status as 'inactive': animal/tag has unknown location but is not on your PIC.....	22
<b>Movement recording need according to supply chain source</b> .....	23
1. Breeder.....	23
2. Purchase stud stock only .....	23
3. Purchase from physical saleyards / public auction / clearing sale.....	23
4. Purchase from online auction .....	23
5. Purchase privately through an agent.....	24
6. Move stock between your own properties with different PICs .....	24
7. Move stock between your own properties with the same PIC .....	24
8. Unmanaged / feral animals: Why should we implement eID if feral animals can spread emergency animal diseases including FMD? .....	24
<b>Scanner Manufacturer apps for transfers</b> .....	25
1. Shearwell NLIS Connect App .....	25
2. Preparing a File for NLIS Upload .....	25



## Snap shot: the most FAQs

### 1. Do I eID tag my lambs this year?

- Yes
- orange is year of birth colour for 2026
- sheep's right ear for females; and left ear for males
- by 6 months of age or prior to leaving the property, whatever happens first.
- Yes, you can bring your unmarked lambs from one property to another for marking if they have the same PIC.

### 2. Can I sell my old ewes and wethers as they are with their visual tags?

- Yes, if they have a visual tag with **your** brand on it, year of birth if you bred them, additional pink tag with your brand if you brought them onto your property.
- Your choice when to start eID tagging older sheep in preparation for being mandatory by 1/7/26 *when leaving the property*.

### 3. What colour eID for older sheep?

- Yellow if home bred; pink if brought on to the property; in year of birth ear for gender.
- DO NOT remove any visual year of birth tags as they will be useful for aging and drafting.

(During the transition period to 1 Jan 2027, it really won't matter if you use left over lamb eIDs - white, black, blue, orange as long as the older sheep have their correct year of birth-coloured visual tags.)

### 4. Are yellow and pink eIDs covered under the incentive scheme this year (2026)?

- Yes.

### 5. Do I have to scan my sheep onto the truck?

- No, it is the receiver's job.
- Yes if the receiver asks you to and you are able.
  - I.e: you sell stud rams and are used to doing it for clients.
- If moving your stock between your own properties with different PICs, you need to sort the transfer and can choose which is easier for you - to scan onto of off truck.

### 6. What is difference between fully and conditional approved eID tags?

- Fully approved eID have 3 years proven field performance
- Conditionally approved tags have 6-35 months field performance.



MAGNIFY  
AGRICULTURE  
GLOBAL

FOCUS. CLARITY. GROWTH. RESPECT.



WAFARMERS



Curtin University

## 7. What are my tag type options?

- One piece / wrap around or two-piece button tags available.
- See approved eID tag sheet or deskmat v2 for suppliers; make sure you have / buy matching applicator.
- Order via rural reseller store, or online direct from suppliers.

### **Approved NLIS eID sheep devices / tags; applicators and manufacturers:**

[https://www.integritysystems.com.au/globalassets/isc/pdf-files/nlis-approved-sheep--goat-eids\\_july-2025.pdf](https://www.integritysystems.com.au/globalassets/isc/pdf-files/nlis-approved-sheep--goat-eids_july-2025.pdf)

## 8. Which tag should I buy?

- Consider your environment and vegetation / fencing, and what has worked for you before:
  - Humidity / moisture – 2-piece may increase moisture retention under the tag;
  - Fencing / vegetation / feeders – 1-piece wrap arounds may get caught and torn out.
  - Size of printing if important
  - No issues? Choose whichever ones you want.
  - Used to one sort? Stay with it / similar options – make sure you have the right applicator.

## 9. What is the main difference between eID and visual tagging?

- No more *additional* pink tags will be needed for sheep brought onto your place – recording them on the NLIS database as they arrive removes that need.
- If a sheep loses its tag and it was not bred on your property, put a pink eID in but in *the year of birth gender ear* so they can still be drafted apart male / female.
- Each sheep will have its own movement history so it can be seen where they came from, how long they were at a PIC, which other sheep were there at same time à
- *Helps make sure you get paid for the sheep you sold, or get the sheep you bought.*

## 10. When will the sheep and/or goats on my property need to be eID tagged?

- **Stock born from 2025:** Any sheep or goats born from 1 January 2025 onwards must be eID tagged before they reach six months of age, or before leaving the property of birth, whichever comes first.
- Saleyards and abattoirs are required to be scanning all stock with eID, from 1 July 2025, and notifying the NLIS database of movements.
- **Stock already on property at 1 Jan 2025:** All sheep or goats born prior to 1 January 2025 must be eID tagged before leaving a property from 1 July 2026 onwards.
  - Homebred sheep are to have a yellow eID added as long as they have a year of birth coloured visual tag.
  - It is optional to use a year of birth coloured eID.
  - Sheep not born on the property and that do not have an eID, will need a pink eID applied.



## 11. What equipment will stock owners need?

- In most cases, there is no need for livestock owners to purchase any equipment for scanning / reading tags.
- They will need the appropriate eID tags and the applicator for the particular type of tag.
- However, access to a scanner may be necessary if you:
  - move stock between different PICs that you run stock on,
  - if you buy stock privately or direct from another producer,
  - if you wish to use scanning equipment and associated software for management purposes.

### GENERAL REMINDERS:

- There should only ever be one eID per animal at any time.
- It is illegal to remove any NLIS tag, but you can take eID off your dead animals to record them on the NLIS database.
- You cannot use anyone else's eID tags or NVD waybills.

## Basic checks for stock movement

### 1. How do I check if my PIC is valid?

- <https://brandssearch.dpir.wa.gov.au/>

### 2. How do I check if my PIC is LPA accredited?

- To check if a PIC is LPA accredited: <https://lpa.nlis.com.au/search>
- If your PIC is not accredited:
  - Sign up or login to myMLA: [www.mla.com.au](http://www.mla.com.au)
  - Once logged in, click on “Linked Services” in the top right hand corner, then “Link more services”
  - Click on “Link Service” under Livestock Production Assurance
  - Click “Register for a new LPA account”
  - Type in your PIC number and click “Continue”
  - Complete the steps to register your PIC. This includes completing a risk assessment of your property and a biosecurity plan, as well as completing an animal welfare module.

### 3. How do I create an eNVD?

- <https://www.integritysystems.com.au/on-farm-assurance/national-vendor-declaration-nvd/envd-help/>
- From the myMLA dashboard (see next section) you will be able to access linked services → eNVD
  - answer questions accordingly (see tutorials in link for web-based or app use)
  - create 3 copies if printing (needs 3 signatures).



## eID devices (tags)

### 1. Can I use any type of eID?

- No. Accredited / approved NLIS devices have undergone extensive testing under a program run by Integrity Systems Company Ltd (ISC) to meet the standards.
- A list of approved tags and devices for sheep and goats is available on the Integrity Systems Company website.

#### Approved NLIS eID devices / tags, applicators and manufacturers:

[https://www.integritysystems.com.au/globalassets/isc/pdf-files/nlis-approved-sheep--goat-eids\\_july-2025.pdf](https://www.integritysystems.com.au/globalassets/isc/pdf-files/nlis-approved-sheep--goat-eids_july-2025.pdf)

- Some are fully approved after a successful three-year trial. Others are conditionally approved, yet to complete the three-year trial.
- Approved devices have their RFID loaded onto the NLIS database when ordered. Using devices that are not accredited will mean that they will not be on the NLIS database, have no traceability and are deemed to be the same as having 'no tag'.
- If stock have non-accredited eID, they must be removed prior to adding an NLIS eID as multiple eIDs will cancel each other out and not scan.
- YOU MUST HAVE A VALID PIC TO ORDER NLIS TAGS.

Year of Birth Colour System

Year of Birth	Tag Colour	eID or Visual Tag?
2020*	Purple	Visual or eID
2021*	Yellow	Visual or eID
2022*	Red	Visual or eID
2023*	Sky Blue	Visual or eID
2024*	Black	Visual or eID
2025	White	eID Only
2026	Orange	eID Only
2027	Light Green	eID Only
2028	Purple	eID Only
2029	Yellow	eID Only
2030	Red	eID Only

\* Yellow eID tags can be used for stock born on-property prior to 1<sup>st</sup> January 2025 and departing from 1<sup>st</sup> July 2026 onward.

Any year - PINK eID tags for any stock not born on-property, departing from 1<sup>st</sup> July 2026 onward.

#### Approved NLIS eID devices / tags, applicators and manufacturers:

[https://www.integritysystems.com.au/globalassets/isc/pdf-files/nlis-approved-sheep--goat-eids\\_july-2025.pdf](https://www.integritysystems.com.au/globalassets/isc/pdf-files/nlis-approved-sheep--goat-eids_july-2025.pdf)



## 2. Do I need a new tag applicator?

- You need to buy the applicator that is approved for the eID device you are purchasing. They are designed specifically and approved with the corresponding device/tag to suit the shape of the tag and to accommodate the microchip without damaging it during application. Using the correct applicator will help ensure the eID is applied well and stays in the ear and remains functioning.

## 3. Will there be a PIC or Brand on my eID tag?

- NLIS eID devices come printed with an external 16-character code (NLIS ID):
  - o the first 8 characters are the PIC of the property where the device is applied.
  - o the next 3 characters denote manufacturer, if **breeder (sheep S or goat K) or post-breeder (sheep T or goat L)** and year of manufacturer (= stud year code).
  - o the next 5 characters are a serial number which can be specified at ordering and can start with a letter.

**WEBU0073XSR01234**

- o The space left on the tag for other information (such as your brand) is dependent on the manufacturer and tag type you choose.

## 4. Why do I have to use species-specific eIDs for sheep and goats?

- Approved NLIS eID **must** match the species they are used on. Using species-specific eID is crucial for tracing specific stock in the event of a disease outbreak. Not every disease affects all species. It also provides an additional layer of verification of tracing the target stock in any instance.
- Approved NLIS eID devices are coded at manufacture to the species they are to be used on. These codes are:

**S for Sheep**

**T for pink sheep tags**

WEBU0073X**S**R01234

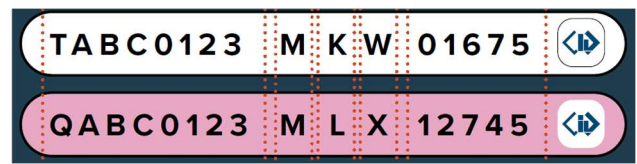
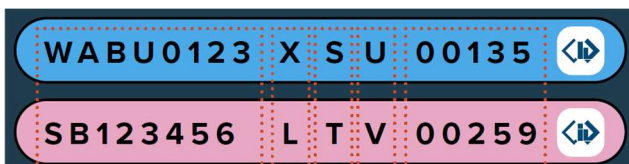
WEBU0073X**T**R01234

**K for Goats**

**L for pink goat tags**

WEBU0073X**K**R01234

WEBU0073X**L**R01234



## 5. Do I need to upload my new tags onto the NLIS database?

- No, NLIS approved eID devices have their details loaded onto the NLIS database by the supplier and are linked to your PIC when manufactured.



MAGNIFY  
AGRICULTURE  
GLOBAL



WAFARMERS



Curtin University

## 6. How will pink post-breeder tags be used in the eID system?

- Pink post-breeder tags identify that an animal was tagged on a property it was not born on. Once the eID system is fully implemented, pink tags will only be necessary if the previous eID tag has fallen out and the animal has moved off its property of birth.
- THERE SHOULD ONLY EVER BE ONE eID PER ANIMAL AT ANY TIME.
- Replacement tags should be fitted as soon as it is reasonable after becoming aware that an animal is without an eID tag. If the old tag number is known, a replacement record can be made on the database to maintain traceability.
- If you have purchased sheep or goats that only have a visual tag (the animals were born prior to 1 January 2025), you must apply a pink post-breeder eID tag before those animals can move off your property from 1 July 2026.

## 7. Will there be any exemptions?

- There will be no general exemptions.
- Harvested rangeland goats going direct to slaughter can go untagged under permit arrangement.
- Rangeland goat harvesters can request a permit from DPIRD which recognises the need to minimise handling of unmanaged, feral animals for the welfare of both the harvester and the goats. Should goats be moved to a property other than an abattoir, they will need to be tagged prior to movement.  
If you operate a registered rangeland goat depot to consolidate loads, please contact DPIRD on 1300 926 547 or email [eIDTeam@dpiird.wa.gov.au](mailto:eIDTeam@dpiird.wa.gov.au)

## 8. Do I have to use eID on lambs going to slaughter?

- Yes. While all due care can be taken, animals jump or get mixed up and errors are made under time pressure. It is not always possible to determine at marking if lambs will eventually go direct to slaughter or not. Many lambs go via a feedlot.
- Using eID verifies the property stock arrive from and shows any error that may be made in linking a whole consignment or a single sheep in lairage to the correct PIC on the NVD/waybill. This is an improvement, not currently available with visual tags, that will avoid unsuitable product going to an inappropriate market and ensures the correct person gets paid for the quality, weight and number they deliver.
- Consider chemical residues as the main risk for lambs – treatments, heavy metals, fodder.



### 9. Do I have to tag my animals if they never leave the property?

- Yes, the *Biosecurity and Agriculture Management (Identification and Movement of Stock and Apiaries) Regulations 2013* state all sheep and goats must be tagged before 6 months of age or prior to leaving a property, whichever occurs first.
- In addition to the Regulations, you may not intend your animals to leave your property but unforeseen events can mean animals must be moved quickly or escape from a property. Eg: bushfire; fences maybe burnt or cut for emergency services vehicles, or stock maybe moved off property and out of harm's way. Without correct tags and identification, ownership is very hard to prove.

### 10. What happens if I have more lambs than tags?

- Due to the higher cost of eID, producers need to be more accurate in their ordering of supplies. Most manufacturers offer a rapid turnaround top up ordering system, where producers who have already sent an order can have more devices delivered very quickly if it seems lambing / kidding is greater than expected.

### 11. What happens to electronic tags I do not use in one year?

- Electronic NLIS devices are responders, meaning that they only respond to a signal that is sent to them by a scanner. For this reason, there is no battery, and they will not go 'flat' in storage.
- Surplus devices can be safely kept for replacing any that fall out while stock are still on the property and for the next cycle of year of birth colour.

### 12. Is information stored on the tag?

- No, the eID tag does not store any information other than its unique RFID serial number.
- The unique RFID number can be used in management software, spreadsheets or databases to record production data for each animal. This means any data collected remains with the owner, it does not travel with the animal.

### 13. Can I re-use my tags?

- No. Once an eID has been applied to an animal, the unique serial number in that device cannot be re-used within the livestock industry. That number will be associated with that individual animal for the whole of its life and the history of that animal recorded in the NLIS database. This prevents duplication and errors in the database.
- Currently there is no avenue to recycle the plastic nor the copper in the devices.



MAGNIFY  
AGRICULTURE  
GLOBAL



WAFARMERS



Curtin University

# The NLIS database

## 1. What is the NLIS database?

- The NLIS database is a national, central repository for the movement records of all stock with eID, and for recording mob-based movements of stock without eID.
- The database ensures that we can respond to an emergency disease or residue incident as quickly as possible, 24/7 without the need to contact stock and property owners.
- The database allows property owners to move stock on and off their PIC/s and also generate reports of which stock were on their property and when.
- In WA, sheep moving to a different PIC must be recorded on the database within 2 days of arriving at the new PIC.

## 2. What information is needed to make a record on the NLIS database?

- A movement record requires:
  - a list of eID numbers / NLIS IDs,
  - a PIC from,
  - a PIC to,
  - an NVD waybill number,
  - the date of movement and
  - the number of stock in the consignment.

# What do I have to do on the database?

## 1. Who has to update the NLIS database?

- The responsibility for updating the NLIS database is the same under eID as it is under the visual based tagging system.
- **If one or more sheep move to a property with a different PIC to where they have been, the NLIS database needs to be updated.** It doesn't matter if they are sold or not, it is a MOVEMENT database.
- The receiver of the livestock is responsible for scanning the eIDs and uploading to the NLIS database.
- The NLIS database must be updated within 48 hours of the movement (unless purchased via a physical public action, where this will be done for you).

## 2. When will stock owners need to update the NLIS database?

- Moving their own stock between their own PICs.
- Private purchases or purchases via online auction sites where sale stock are not congregated are the responsibility of the buyer.



MAGNIFY  
AGRICULTURE  
GLOBAL

FOCUS. CLARITY. GROWTH. RESPECT.



WAFARMERS



Curtin University

### 3. Can someone do the scanning / transfer for me?

- Yes
- The receiver is required to ensure the NLIS database is updated but **they can request the upload is completed by the vendor / consignor or their livestock agent.**
- If someone does the upload for you, ask for the 'Upload ID' number as a receipt/proof it has been done and write it on your copy of the NVD/waybill the sheep came with.
- Scanning wands will be available to borrow from most Regional DPIRD offices, some local Community Resource Centres and some Local Government offices. Stock agents and stud breeders managing on-farm or private sales **may** provide this scanning service for you if you ask for it.

### 4. When will the transfer of sheep to my PIC be done for me?

- All animals purchased through physical public auctions (saleyard, clearing sale, on-farm ram sales) will be scanned at the sale and transferred by the agent / auctioneer to the new owners on the NLIS database within 48 hours of purchase.
- Stock received from a pound will also be transferred to your PIC.

### 5. Do I need to upload my new tags onto the NLIS database?

- No, NLIS approved eID devices have their details loaded onto the NLIS database and are linked to your PIC when manufactured.

### 6. What do I do with tags from dead sheep?

- If you remove the eID tags from dead sheep, ie: you KNOW the sheep are dead - they can be recorded as dead on the NLIS database. Scan or read the NLIS ID of any collected tags and notify the database.
- *Don't cut through the pin if that is where the chip is and you want to scan them.*
- If they don't scan, you can carefully copy the code on the outside and use that. Alternatively, take a clear photo.

### 7. What do I do when I find a tag on the ground / in the yards / on the truck

- If you find a lost eID tag in the paddock, yards or on the truck, it can be set to 'lost' on the database, but you must not assume the animal is dead. *"Notify db of device status..."*



MAGNIFY  
AGRICULTURE  
GLOBAL

FOCUS. CLARITY. GROWTH. RESPECT.



WAFARMERS



Curtin University

## Creating an account and using the NLIS database

### 1. Creating an NLIS account

- Make a myMLA account at <https://www.mla.com.au/>
  - This allows you to have everything in 1 place including:
    - eNVD (Electronic National Vendor Declaration)
    - LPA (Livestock Production Insurance)
    - NLIS (National Livestock Identification System)
- Scroll down and select "National Livestock Identification System" from MLA services.  
→ This takes you to the registration page as seen below.

**REGISTER**

**BEFORE YOU START**  
Please be aware that new account requests may need to be validated by your State/Territory NLIS authority.  
It could take up to 7 days for us to activate your account.

\*Required

**1 Agree to the NLIS Terms of Use**

I acknowledge and agree that the use of the ERP and NLIS Database, the use and disclosure of the information in the Database, and the administration of the NLIS is subject to the [NLIS Terms of Use](#).  
I warrant that the below information provided by me is accurate.

I agree to the NLIS Terms of Use

**2 Choose your account type**

Are you a Producer?  Yes  No

\*Producer\* includes small landholders and pet owners.

- Tick the "Agree to the NLIS Terms of Use" box
- If you are a producer or a non-commercial (hobby) stock owner, select the "Yes" option

**3 Provide your account details**

Property/Trading name

Property/Trading name\*

Property Identification Codes (PICs)\*

PIC/Tail tag number

Add a PIC/Tail tag number +

Type of livestock you work with

CATTLE

SHEEP (Mobs)

GOAT (Mobs)

SHEEP (Individual)

GOAT (Individual)

CAMELID (South American)



MAGNIFY  
AGRICULTURE  
GLOBAL



Curtin University

- Enter both your property/trading name and all of your PICs.
- Select all types of livestock you work with.
- Enter all of your contact details;
- Tick the box "I agree to the NLIS Personal Information Collection".

Contact details ⓘ

Title*	First name*	Last name*
Please select...	Your first name	Your last name

Contact number\*  
Your phone or mobile number

Email address\*  
Your email address

Confirm your email address\*  
Confirm your email address

Fax number (optional)  
Fax number

Postal address\*  
Enter your address.

Line 2 of your contact postal address

Town/City*	Postcode*	State*
Your town/city	Your postcode	Select state...

Meat & Livestock Australia Limited (MLA) are requesting this information from you to facilitate the traceability of animals in accordance with the National Traceability and Performance Standards. We will use the information to facilitate better traceability through the value chain, and limited personal information will be disclosed to registered users and third parties in line with our Terms of Use. We may also use the information for keeping you informed about industry information, other communications from MLA, market research, reporting and analysis purposes

By providing MLA with your personal information, you consent to the collection and handling of your personal information in accordance with MLA's privacy policy ([MLA Privacy Policy](#) | [Meat & Livestock Australia](#)). You may access and correct any personal information held by MLA by contacting us at [privacy@mla.com.au](mailto:privacy@mla.com.au).

Providing us with the requested information is required by State and Territory law. If you choose not to provide us with your information you may not be compliant with your legal obligations.

I agree to the NLIS Personal Information collection

- Enter and confirm your password by entering it again; keep it recorded somewhere
- Hit the register button.

4 Choose your password

Please choose a password to finish your registration. Your new password must include the first 3 following criteria -

- Minimum of 8 and maximum of 15 alphanumeric characters (i.e. letters and numbers).
- Must contain at least one Upper case alphabetic character (e.g. A-Z).
- Must contain at least one Lower case alphabetic character (e.g. a-z).
- Special characters are optional. Please note that you are not able to use the following 5 characters > & < ' and spaces/blank characters.

If you are unsure what to enter, then please contact the ISC Customer Service on 1800 683 111.

Create your password\*

Password

Confirm your password\*

Re-enter your password

REGISTER

CANCEL

- All accounts need to be approved and it might take up to 7 days for your account to be approved, so you want to make sure it is all good to go before you need to move livestock.



## 2. Transferring stock on to my PIC Via the NLIS database on a computer/laptop

- Scan the EID tags on all incoming stock or obtain a list of EIDs from vendor. Make sure it is in a list format you can copy and paste (e.g. Word Doc/Notepad file)
- Open NLIS database via <https://nlis.com.au/> or login via myMLA, and
- Select “Sheep (individual)” and
- “Notify the database of: Livestock moved onto my property (Sheep/Goat/SA Camelids – individual)” and
- click “Go”

**Which livestock do you want to work with?**

I want to work with

**What do you want to do today?**

I want to

### Livestock moved onto my property (Sheep/Goat/SA Camelids - individual) - Sheep (individual)

**Choose your method**

**How would you like to record your information?**

Click on the button to choose the option you want.

I want to  manually on-screen.

I want to  I have created on my computer.

- Click “type in the details”.
- Enter the details of the transfer, then click “Continue”.
  - For question 1: Copy and paste your EID list (from having your reader open on your computer or from a downloaded file on your computer) into the large box.
  - For question 4: The NVD/waybill number is 8 numbers printed at the top of the document.
  - For question 6: This number doesn’t have to match exactly to the number of EIDs you have listed (although ideally it should). The database will create a mob-based movement for any stock that have been moved but aren’t in your list of EIDs.



Livestock moved onto my property (Sheep/Goat/SA Camelids - individual) - Sheep (individual)

**Enter the details** Step 1 2 3

**1 Enter the livestock you want to move**

Type the visual number (NLISID) or electronic number (RFID) in the box below. Press the 'Enter' key ↵ after each device number.

951 000000000000  
951 000000000001  
951 000000000002  
951 000000000003  
951 000000000004

[Help](#)

**3 What PIC are you moving them from?**

Select your source PIC below.

WABC0123

[Help](#)

**4 What is the NVD/Waybill number?**

Enter the NVD/Waybill number in the field below.

3888888

[Help](#)

**5 When were the livestock moved?**

Choose the date below.

1 Jan 2025

[Help](#)

**6 Number of head**

Enter the Number of head

5

[Help](#)

**2 What PIC are you moving them to?**

Enter the destination PIC below.

(Please select)

[Help](#)

[Back](#)

[Continue](#)

- Check that the details of the transfer are correct, then click "Send".
- If you need to correct the details, click "Back".

Livestock moved onto my property (Sheep/Goat/SA Camelids - individual) - Sheep (individual)

**Confirm details** Step 1 2 3

If these details are correct, click 'Send' to continue. If they are incorrect, click 'Back' to change them.

[Help](#)

to PIC: [redacted] from PIC: **WABC0123** with NVD/Waybill: **3888888** on **01/01/2025** Number of head: **5**

NLISID/RFID
951 000000000000
951 000000000001
951 000000000002
951 000000000003
951 000000000004

[Back](#)

[Send](#)



MAGNIFY  
AGRICULTURE  
GLOBAL



Curtin University

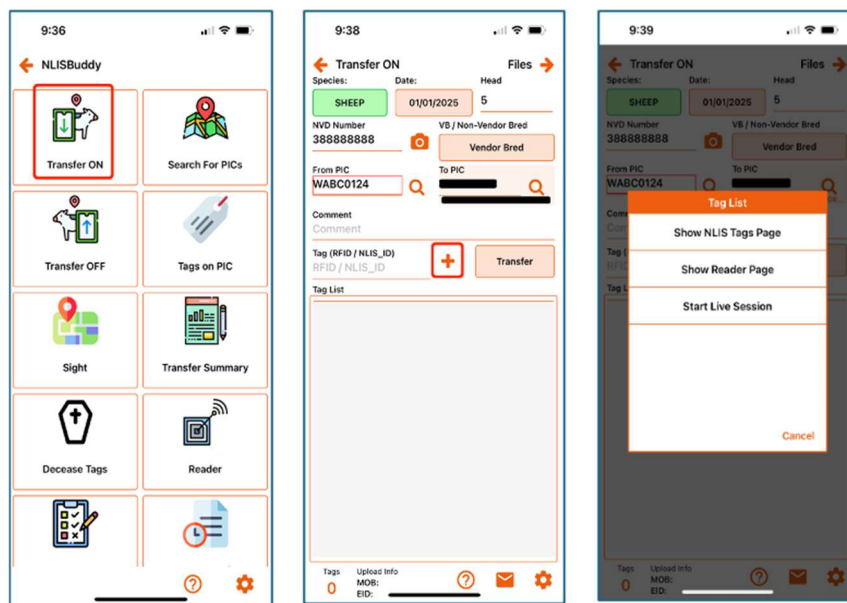
### Livestock moved onto my property (Sheep/Goat/SA Camelids - individual) - Sheep (individual)

Receipt	Step 1 2 3
This receipt confirms you have sent your transaction details to the NLIS database.	
Your reference number for this transaction is	
Upload ID: <b>153496666</b>	
Associated Upload Ids: <b>153496667 and 153496668</b>	
When the NLIS database has processed your information, an e-mail will be sent to <b>gbasha@nlis.com.au</b> letting you know if the transaction was successful or if there was a problem. This usually takes a few minutes.	
The phone number for the NLIS Database Helpdesk is 1800 683 111.	
<a href="#">▶ Help</a>	
<a href="#">▶ Print this receipt</a>	
<a href="#">▶ View my transaction history</a>	
<a href="#">▶ Submit another upload</a>	<a href="#">▶ Back to home</a>

- Record the **Upload ID** as proof that the transfer has been completed. This will be recorded in your NLIS account inbox (accessible from the header tabs at the top of the screen), as well as being sent to the email address associated with your NLIS account.
- Check your **transaction history** to ensure the transfer was accepted without any errors.
- “COMPLETE” – transfer recorded with no known error
- “WARNING” – transfer completed but there is an issue to review; click on WARNING for more information.
- “ERROR” – transfer was not recorded; click on ERROR to get more information.

### 3. NLIS Buddy: Transferring stock to your PIC using NLIS Buddy app on your phone

- Open the app and sign into your NLIS account.
  - Ensure you enter your PIC as well as your login username and password to access full app functionality.
  
- Select “Transfer ON” and enter the details of the transfer.
  - To enter EID numbers,
  - select “+”, then
  - “Show Reader Page”

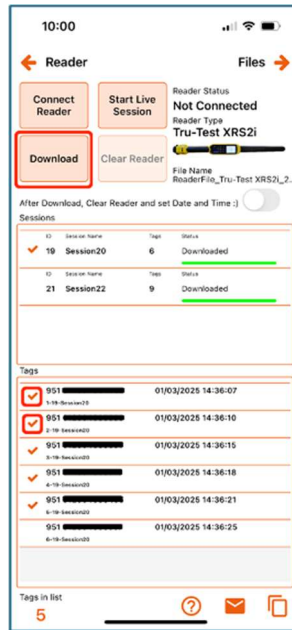


- Select “Connect Reader” and follow the prompts to connect your device to the app.
  - For help with connecting different reader types, select the “?” icon at the bottom of the screen

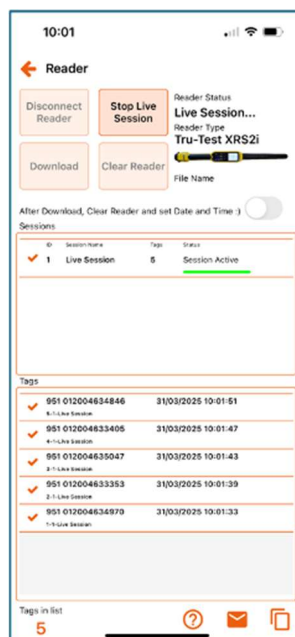




- You now have 2 options:
  - o **Use EIDs scanned in a previous session** on the reader:
    - Select “Download” to download the list of tags previously scanned by this reader.
    - You can tick and untick different sessions or different tags to include them in the transfer or not.

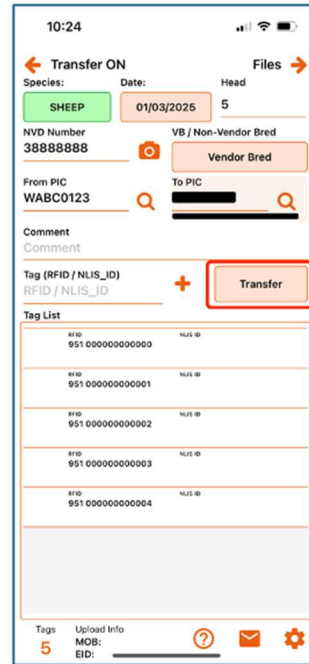
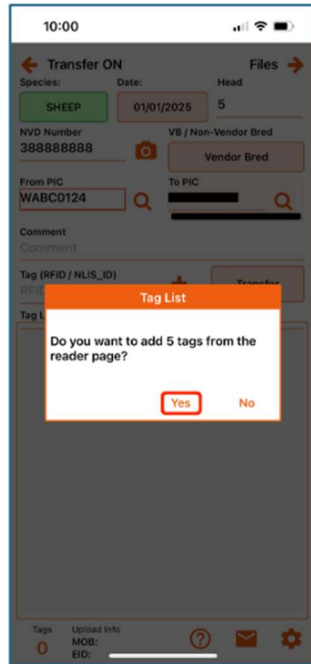


- o **Start a new session to scan EIDs live:**
  - Select “Start Live Session” and wait for the app to connect to the reader.
  - Once “Session Active” and a green bar appear on the screen, you are ready to scan tags which will then auto-import into the app.
  - If you scan a tag you do not wish to include in the transfer, simply untick it from the list.

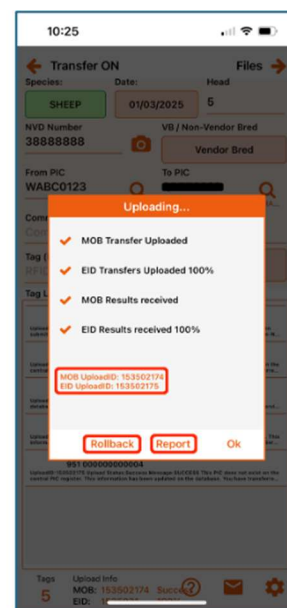
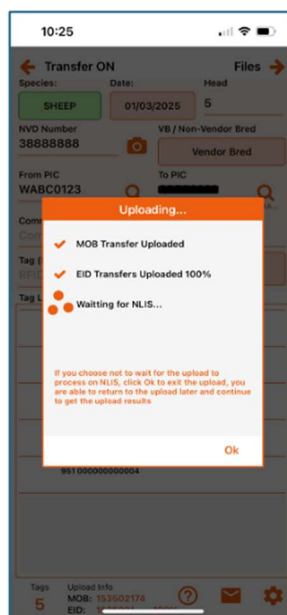
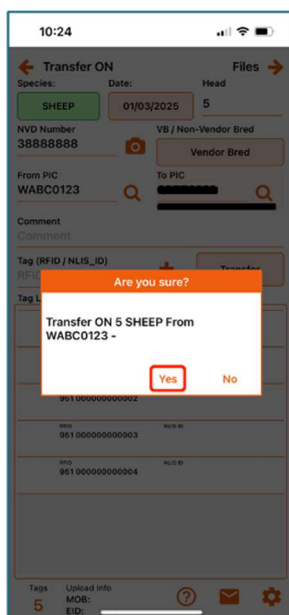




- Once you have a list of tags to transfer,
  - select “Reader” in the top left corner to go back to the transfer page, and then
  - select “Yes” when prompted to add the list of tags you prepared to the transfer.
- If your transfer details are all correct, then select “Transfer”.



- Select “Yes” and then wait for the upload to be completed (should only take a minute or two).
- Once complete, you are able to access a report of the transfer to check for any errors, and
- “Rollback” the transfer to delete the record if any errors are present.
- Remember to record the Upload ID to prove you have completed the transaction.





MAGNIFY  
AGRICULTURE  
GLOBAL



WAFARMERS



Curtin University

#### 4. Preparing a File for NLIS Upload

NLIS how-to-guide

<https://www.integritysystems.com.au/globalassets/isc/pdf-files/nlis-documents/how-tos-pdfs/prepare-a-file-for-upload>

#### 5. Run a report to see when sheep came on / went off my PIC

- Which livestock do you want to work with today? → “Sheep (individual)”
- What do you want to do today? → “View devices on my property” (*nested under “Reports”*)
  - Change Report Type to “Livestock that have moved onto/off my property”
  - Adjust date range according to needs and click “Go”
  - NOTE: this may take several minutes to load

#### 6. Recording a replaced tag on the database (when I have the old tag)

- What do you want to do today → “Tag replacement”
  - “Type in the details”
  - “What is the device you want to replace” (Old tag)
  - “What is the new device” (New tag)
  - Date the tag was replaced

#### 7. Remove tags off the NLIS database when stock die

- What do you want to do today -> “Livestock that have died on property”
  - “Type in the details”
  - “Enter the livestock that have died” (scanned devices or carefully copy off the outside of the device)
  - “What PIC did livestock die on” (Your PIC)
  - Date the livestock died / or at least approximate month.

Or

- instead of “type in the details” use “choose from the list”
- all livestock currently on “enter your PIC”
- Show only active devices
- “continue”
- select all devices which you KNOW have come off a dead animal.

#### 8. Change status of a tag if lost, damaged

- Which livestock do you want to work with today? → “Sheep (individual)”
- What do you want to do today? → *Notify database of **device status***
- Choose type in the details for select from list
- Copy in a list of RFID or carefully type in the NLISID of collected tags



MAGNIFY  
AGRICULTURE  
GLOBAL

FOCUS. CLARITY. GROWTH. RESPECT.



WAFARMERS



Curtin University

- Enter the current date
- Select status type
  - Lost (L2) for any you have found in yards etc
  - Damaged (D1) for any that got wrecked at application
- Select ‘On’
- Comments optional
- Continue as for other transactions.

#### 9. Record tag status as ‘inactive’: animal/tag has unknown location but is not on your PIC

- Which livestock do you want to work with today? → “Sheep (individual)”
- What do you want to do today? → *Notify database of device status*
- Choose type in the details for select from list
- Select status type
  - Select Inactive (IA)
- Select ‘On’
- Comments optional
- Continue as for other transactions.



MAGNIFY  
AGRICULTURE  
GLOBAL



WAFARMERS



Curtin University

## Movement recording need according to supply chain source

### 1. Breeder

**From 1 January 2025:** Identify all sheep and goats born on the property with an approved NLIS eID within six-months of birth or before leaving their property of birth, whichever is earlier.

All NLIS eID devices will be recorded against your PIC on the NLIS database by the manufacturer when you purchase them. This means if **you only breed and send stock off, you do not have to use the database or do anything different other than change tag type.**

### 2. Purchase stud stock only

If you only bring stock on from your stud breeder, and you **purchase at an on-farm auction**, the agent will transfer those stock to your PIC. **There is nothing more for you to do.**

Check the stock still have an their eID device before they leave the property. Replace with a post-breeder (pink) eID if missing or non-functioning.

If you **purchase privately from a stud breeder**, the breeder *may* transfer the stock for you, but it is **your responsibility** to make sure it is done. You can do it yourself or get someone to do it for you.

Always ask for the Upload ID ('receipt') from anyone who does a transfer for you so that you know it is done.

### 3. Purchase from physical saleyards / public auction / clearing sale

If you buy in from physical saleyards, the stock you buy will be transferred to your PIC for you by the saleyard operator / agent. You will only need to have some post-breeder (pink) eID devices to apply to any stock that may lose their existing eIDs. **You do not have to use the database or do anything different than change tag type.**

### 4. Purchase from online auction

If you purchase stock from an online auction, where **the stock are not congregated together**, the **movement to your PIC is your responsibility to record** on the NLIS database within 2 days of the arrival at your property. You can do it yourself or get someone to do it for you, but it is your responsibility to organise it.

Always ask for the Upload ID ('receipt') from anyone who does a transfer for you so that you know it is done.

You will need some post-breeder (pink) eID devices on hand to apply to any stock that lose their existing eID.



MAGNIFY  
AGRICULTURE  
GLOBAL

FOCUS. CLARITY. GROWTH. RESPECT.



WAFARMERS



Curtin University

## 5. Purchase privately through an agent

If you purchase stock privately through an agent or directly from another producer, the **movement to your PIC is your responsibility** to record on the NLIS database within 2 days of the arrival at your property. You can do it yourself or get someone to do it for you, but it is your responsibility to organise it.

Some producers request the agent do the transfer as a condition of contract of sale.

Always ask for the Upload ID ('receipt') from anyone who does a transfer for you so that you know it is done.

## 6. Move stock between your own properties with different PICs

Stock need to be transferred on the NLIS database every time they move to a different PIC, regardless of whether they are sold or just moved.

If **you own both PICs, the movement to your second PIC is your responsibility** to record on the NLIS database within 2 days of the arrival at that PIC. You can do it yourself or get someone to do it for you, but it is your responsibility to organise it.

The stock will still need to be identified correctly and have a movement document or equivalent.

## 7. Move stock between your own properties with the same PIC

If you move stock to a **different property but it has the same PIC, you do not need to do anything** on the NLIS database. The stock will still need to be identified correctly and both properties need to be listed on your PIC card.

## 8. Unmanaged / feral animals: Why should we implement eID if feral animals can spread emergency animal diseases including FMD?

Livestock traceability and feral animal management work together to manage animal disease transmission.

While feral animals may play a role in the transmission of some livestock diseases, **transmission between managed livestock is likely to be the major immediate threat** in the case of emergency animal diseases given the larger numbers, closer geographic proximity of domesticated livestock and regular congregation at saleyard, feedlots and processors.

Control of feral animals during an exotic disease emergency is outlined in the AUSVETPLAN for wild animal response (<https://animalhealthaustralia.com.au/ausvetplan>).



MAGNIFY  
AGRICULTURE  
GLOBAL



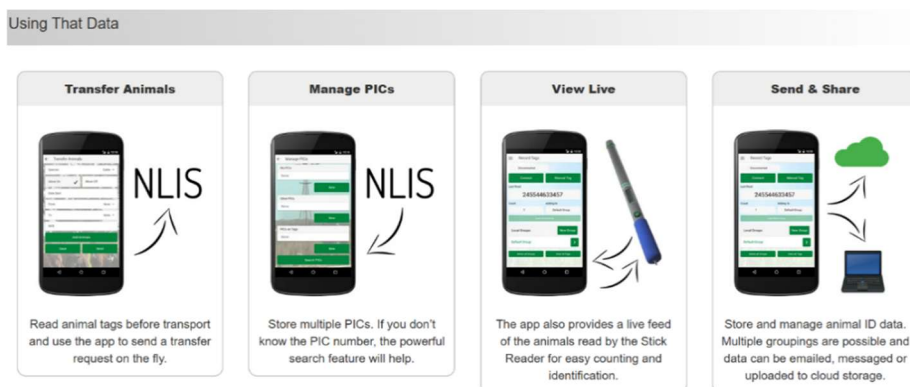
Curtin University

## Scanner Manufacturer apps for transfers

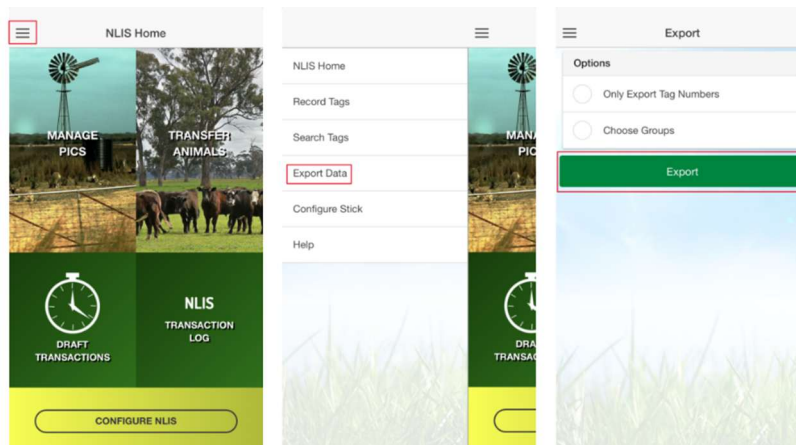
### 1. Shearwell NLIS Connect App

Shearwell Australia. NLIS Connect - App for iPhone® & Android™

- A valid Shearwell stick reader ([SDL440S](#)) must be used with this application
- Steps
  - Open NLIS Connect app (downloadable from the app store) and hit “Configure NLIS”
  - NLIS Connect app works for iPhone and Android, and the SDL app works for Mac and PC



- Tags can be exported from the NLIS Connect app by hitting the top left menu button on the home page and then hitting export data



- This data can be emailed to a computer and then needs to be prepared using the information available from link below NLIS upload.

### 2. Preparing a File for NLIS Upload

- NLIS how-to-guide to create a file instead of typing in details or selecting from a list.

<https://www.integritysystems.com.au/globalassets/isc/pdf-files/nlis-documents/how-tos-pdfs/prepare-a-file-for-upload>